



# Ndondomeko Ya Chuma Cha Boma 2021-22



Photo: © UNICEF/2020/Chikondi

## 1. VYA CHUMA M'MALAWI

M'chaka cha 2020, chuma cha Malawi chikakwera na 0.9 peresenti kulekana naumo boma likayelegela kuti chuma chikwerenge na 1.9 peresenti. Ndipo m'chaka cha 2021 chuma cha boma chikuyeleyeskeka kuti chikwerenge na 3.8 peresenti chifukwa cha kukwera kwa ntchito zaulimi kweniso magawo yanyakhe ya chuma.

M'chaka cha 2021, mitengo ya katundu yikuyeleyesyeke kuti yikwengele na 7.5 peresenti ndipo boma labika ndondomeko zakwenerera kuti mitengo yakatundu yikhire kufikila pa 3 peresenti m'chaka cha 2025.

## 2. NDONDOMEKO YA CHUMA M'CHAKA CHA 2021-22

Ndondomeko ya chuma ya chaka cha 2021-22 njakufupikirapo na miyezi yitatu ndipo yiyambinge mu mwezi wa Julayi 2021 mpaka mwezi wa Marichi 2022. Ichi chikung'anamula kuti chaka cha boma chasintha; kwamba mu chaka cha 2022 chaka cha boma chambirenga Epulayero kufikira Marichi.

### 2.1 NDALAMA IZO BOMA LITOLERENGE MU 2021-22

Boma likuyelegesa kuti litolerenge ndalama zakukwana K1,271.26 biliyoni kufumila mu nthowa zakupambana pambana mu chaka cha 2021-22. Pa ndalama izi, K1,100.95 biliyoni zitolerekenge mu chalo chithu mwenemuno, kweni K170.31 biliyoni yifumilenge ku mabungwe na vyalo vyakuwalo. Pa ndalama izo boma litolerekenge, 82 peresenti zifumenge kumisonkho, 4.5 peresenti

zifumilenge kundomeko zinyakhe ngati viphaso na 13.4 peresenti kufumila ku vyalo vya kuwalo na mabungwe ya chuma yakuwalo.

Mu chaka cha 2021-22, ndalama zamisonkho zikuyeleyeskeka kuti boma litolerenge K1,044.05 biliyoni yeneyiyo yikucheperako nda 6.5 peresenti mwakuyelegeza nda chaka cha 2020-21. Ndalama zakufumila ku viphaso zikhilenge na 10.9 peresenti kufumila pa K63.1 biliyoni m'chaka cha 2020/21 kufikila pa K56.9 biliyoni m'chaka cha 2021-22. Ivi vili ntheula chifukwa chakuti chaka cha 2021/22 chitiwenge na miyezi nayini (9) mmalo mwa miyezi tweluvu (12).

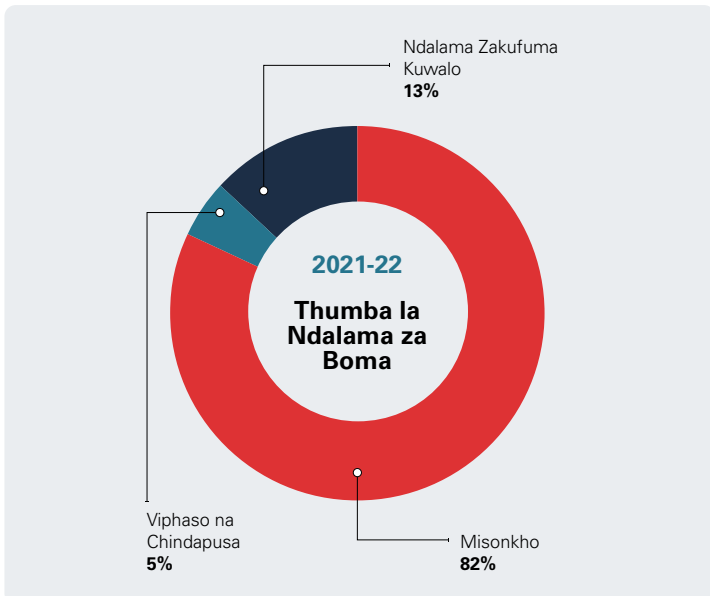
Pa ndalama zakufumila kuwalo za K170.31 biliyoni, K58.43 zifumilenge ku vyalo vya kuwalo ngati Norway, Germany na Ireland. K111.88 biliyoni yifumirenge ku mabungwe yakuwalo nga Banki yachalo chose cha pasi, (World Bank), Banki yikulu mu Africa (African Development Bank) na Banki ya vyalo vyaku Ulaya (European Union).

### 2.2 KAGWILISYILO KA NTCHITO KA NDALAMA

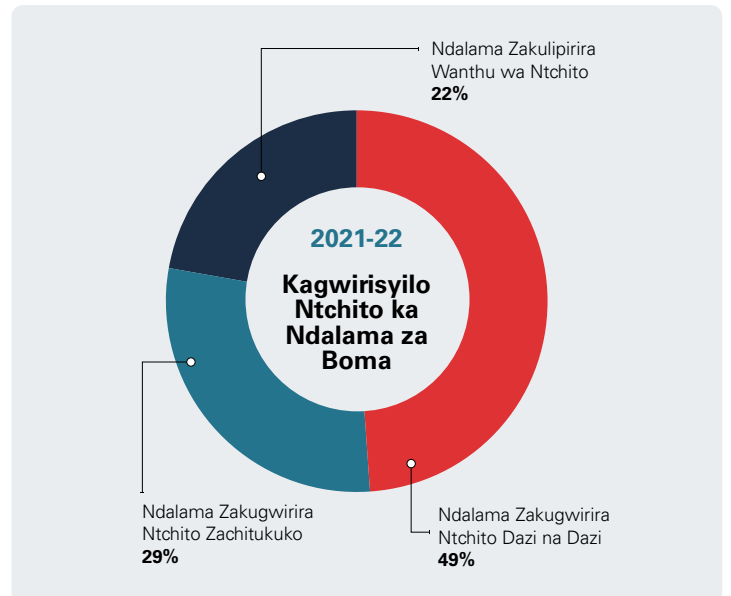
M'chaka cha 2021-22, ntchito za Boma zikhumbenge ndalama zakukwana K1,995.1 biliyoni. Ndondomeko iyi yachuma yakhila na 9.2 peresenti pakuyelegesa na chaka cha 2020-21 apa ndalama zikawa K2,190.18 biliyoni. Pa ndalama izi, K1,424.3 biliyoni nja kwendesyela ntchito za Boma, nawumo tawonesyela pa chithunzi 2.

K570.84 biliyoni nja chitukuko cha chalo nga vyozengezenga. Pa ndalama za chitukuko izi, K219.60 biliyoni yifumenge mu chalo chithu chenechino chino, kweni K351.24 biliyoni yifumilenge ku vyalo vya kuwalo na mabungwe yakuwalo.

#### CHITHUNZI 1



#### CHITHUNZI 2



### 2.3 KUCHEPA KWA NDALAMA ZA BOMA

M'chaka cha 2021-22, ndalama izo boma litolerege zicheperengepo na K723.8 biliyoni kufumila ku ndalama izo boma likukhumba kugwirira ntchito m'chaka ichi. Sono, Boma likukhumbika kuti libwereke ndalama zakukwana K134.8 biliyoni kufumila ku mabugwe ya vyalo vya kuwalo kweniso K589.1 biliyoni kufumila mu chalo chithu mwenemuno.

M'chaka cha 2021-22, ndalama izo boma litolerege zicheperengepo na K723.8 biliyoni kufumila ku ndalama izo boma likukhumba kugwirira ntchito m'chaka ichi.

**THEBULO 1 NDONDOMEKO YA CHUMA CHA BOMA CHA 2021-22 (MK' MILIYONI)**

Nthambi	Ndondomeko Chuma ya 2020-21	Ndondomeko Ya Chuma Yakusinthā Ya 2020-21	Ndondomeko Ya Chuma Ya 2021-22
<b>Ndalama izo boma litolerege</b>	<b>1,435,051</b>	<b>1,523,376</b>	<b>1,271,261</b>
<b>Ndalama izo boma litolerege mu chalo chithu mwenemuno</b>	<b>1,179,345</b>	<b>1,185,829</b>	<b>1,100,946</b>
Misonkho	1,116,265	1,116,265	1,044,051
Viphaso na chindapusa	63,080	69,564	56,895
<b>Ndalama zakufumila kuwalo kwa chalo</b>	<b>255,705</b>	<b>337,547</b>	<b>170,314</b>
Zafumila ku vyalo vyakuwalo	34,755	40,178	58,430
Zakufumila ku Mabungwe yakuwalo	220,950	297,369	111,884
<b>Ndalama Zakugwilisya Ntchito</b>	<b>2,190,180</b>	<b>2,335,053</b>	<b>1,995,101</b>
<b>Ndalama Zakwendesyela Boma</b>	<b>1,678,993</b>	<b>1,719,213</b>	<b>1,424,263</b>
<b>Ndalama zakulipira wanthu wa ntchito</b>	<b>538,018</b>	<b>542,157</b>	<b>449,615</b>
Malipiro ya wanthu wantchito wamuboma	523,680	525,280	436,324
Ndalama Za Peshoni	14,338	16,877	13,290
<b>Ndalama zapachanya(interesity) pa ngongole za Boma</b>	<b>376,014</b>	<b>376,014</b>	<b>299,728</b>
Pa ngongole zakutoleka ku vyalo vyakuwalo	11,854	11,854	14,474
Pa ngongole zakutoleka muchalo mwenemuno	364,160	364,160	285,254
<b>Ndalama zakugulira katundu na vyakuchitika</b>	<b>309,211</b>	<b>347,065</b>	<b>269,642</b>
Katundu na vyakuchitika	185,169	223,829	164,769
Vyaumoyo	60,145	59,625	49,026
Vyaulimi	7,550	7,350	4,989
Vyamasambilo	35,045	34,205	29,783
Ngongole za maji na magetsi	7,000	7,000	5,000
Ndalama zakunozgela mathanki yakusungiramo mafuta	2,984	2,984	2,875
Ndalama zakugulira ngoma	10,000	10,353	12,000
Ndalama zakupangila visola	1,318	1,718	1,200
<b>Ndalama zakwendeskela Mabungwe ya Boma</b>	<b>177,240</b>	<b>184,181</b>	<b>154,000</b>
Ndalama zakwendeskela Mabungwe ya Boma	177,240	184,181	154,000
Bungwe lakwendeska ndalama za miseu (Road Fund Administration)	33,991	33,991	31,332
Bungwe lakuzenga na kunozga miseu (Roads Authority)	4,416	4,416	3,312
Bungwe lakutolera Misonkho	32,396	32,396	30,992
Mabungwe ya Boma	97,437	104,378	79,363
Ngongole zawana wasukulu waukachenjede	9,000	9,000	9,000
<b>Ndalama Zakovylira a Malawi</b>	<b>266,010</b>	<b>248,250</b>	<b>221,825</b>
Fetereza wakukhila mtengo	160,169	141,996	141,988
Ndalama za banthu wakupumula pa ntchito za boma	102,840	103,254	77,588
Ndalama zakupeleka kwa wanthu wakusuzika	3,000	3,000	2,250
<b>Ndalama za Chipuputa misozi</b>	<b>12,500</b>	<b>21,547</b>	<b>29,453</b>
Ndalama za Chipuputa misozi	12,500	21,547	25,453
<b>Ndalama za Ntchito ya Chitukuko</b>	<b>511,188</b>	<b>615,840</b>	<b>570,838</b>
Zakufumila ku vyalo na mabungwe yakuwalo	410,295	511,129	351,243
Zakufumila mu chalo mwenemuno	100,893	104,711	219,595
<b>Ndalama zakupelewera</b>	<b>- 755,130</b>	<b>- 811,677</b>	<b>- 723,840</b>
<b>Ndalama zakubwereka</b>	<b>755,130</b>	<b>811,677</b>	<b>723,840</b>
Zakufumila ku Mabungwe na vyalo vya kuwalo	224,779	246,265	134,774
<b>Zakufumila muchalo mwithu mwenemuno</b>	<b>530,351</b>	<b>565,412</b>	<b>583,544</b>

### 3. VIGAWO VIKULU VYA NDONDOMEKO YA CHUMA CHA BOMA CHA 2021-22

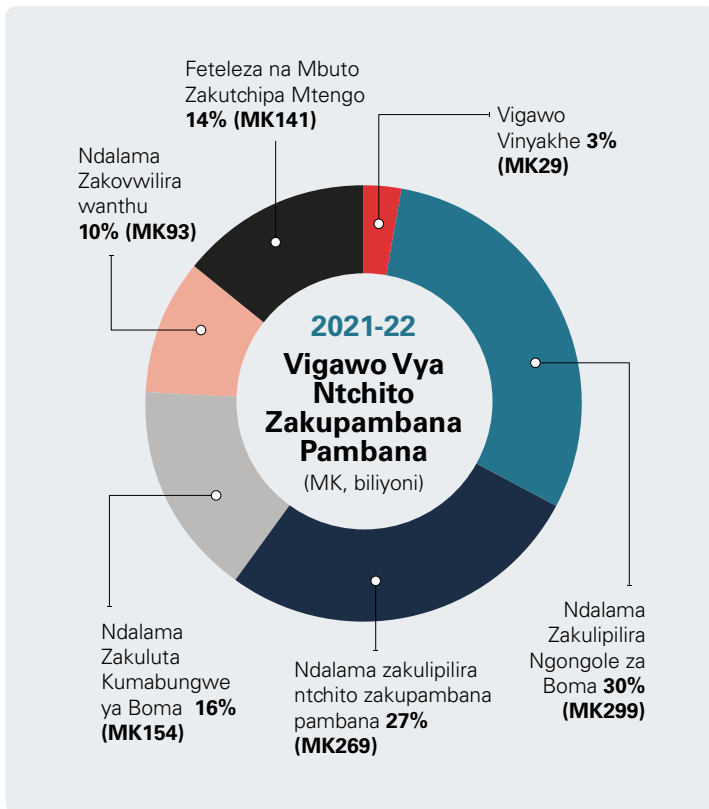
#### 3.1 MALIPIRO YA WANTHU WAKUGWIRA NCHITO M'BOMA

Ndalama zaku lipira wantchito m'boma zawikika zakukwana K436.32 biliyoni pa miyezi nayini. Ndalama izi zakhila na 16.7 peresenti pakuyanisyilapo na chaka cha 2020-21. Ndalama izi zacheperapo chifukwa chaka cha 2020-21 ntchakufupikirapo na miyezi yitatu.

#### 3.2 NTCHITO ZA DAZI NA DAZI ZA BOMA

Ntchito za Boma zapasika ndalama zakukwana K987.9 biliyoni. Ndalama izi zachepa na 14.5 peresenti pakuyanisyila na chaka cha 2020-21. Chakujambula ichi chili musi umu chikuwoneska ivi.

#### CHITHUNZI 3



### 4. NDONDOMEKO YA CHUMA PAKUYELEZGELANA NA MALOTO YA CHALU CHINO (AGENDA 2063)

Chithuzi ichi chili pasi apa chagawa chuma pakutolera vigawo vikulu vya maloto ya chalo chithu.

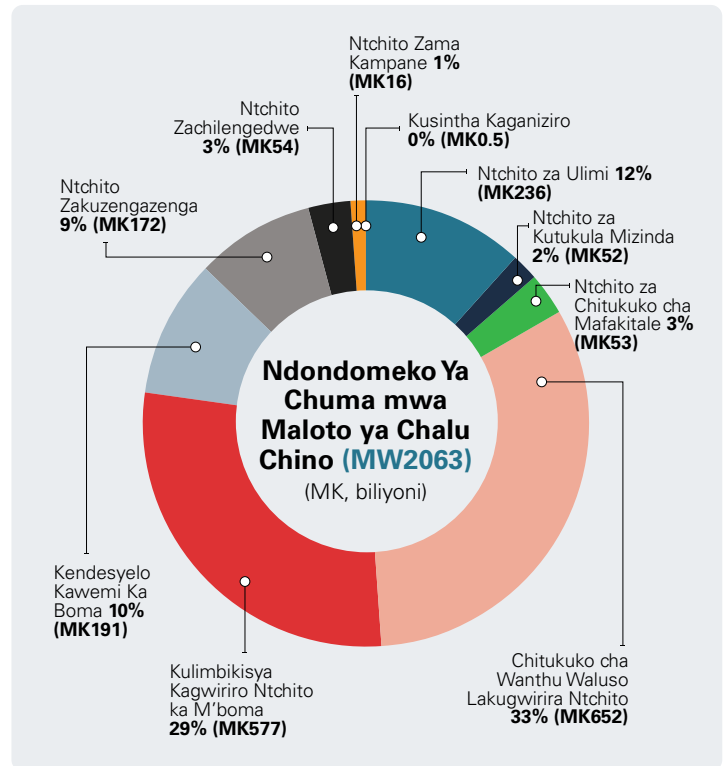
#### 4.1 MAPILALA /VYAKUKHOZYELA

Ntchito za ulimi zapasika 12 peresenti, Ntchito za Masambilo zapasika 18 peresenti, Ntchito zakutukula mizinda zapasika 3 peresenti na Ntchito za mafakitale 2 peresenti.

#### 4.2 VYAKUKHUMBIKWIRA

Ntchito za masambiro na umoyo, zapasika 32.7 peresenti, 29 peresenti yapelekeka ku khozgera nthambi za boma, 9 peresenti yapelekeka ku ntchito za kendesyelo ka boma ndipo 9 peresenti yapelekeka ku ntchito ya vyakuzenga zenga.

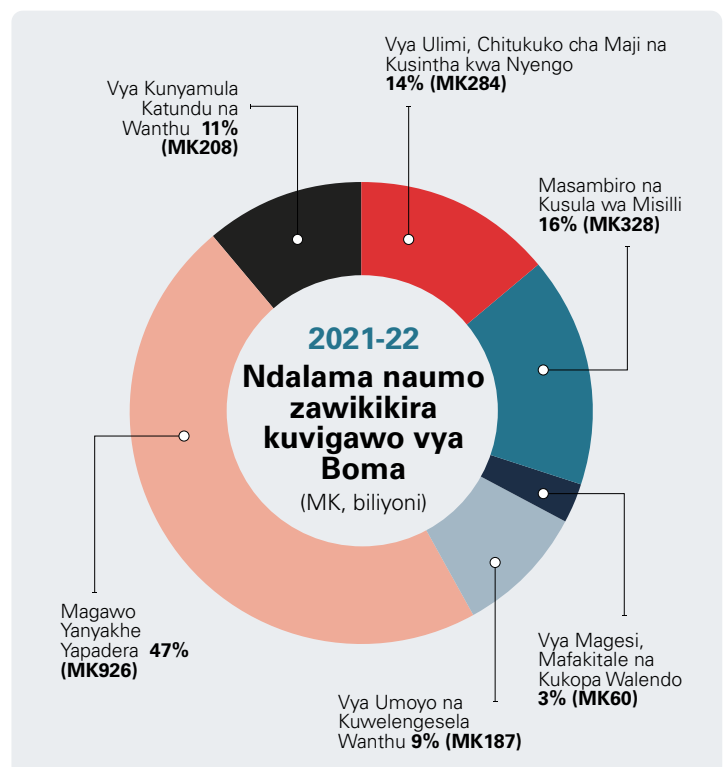
#### CHITHUNZI 4



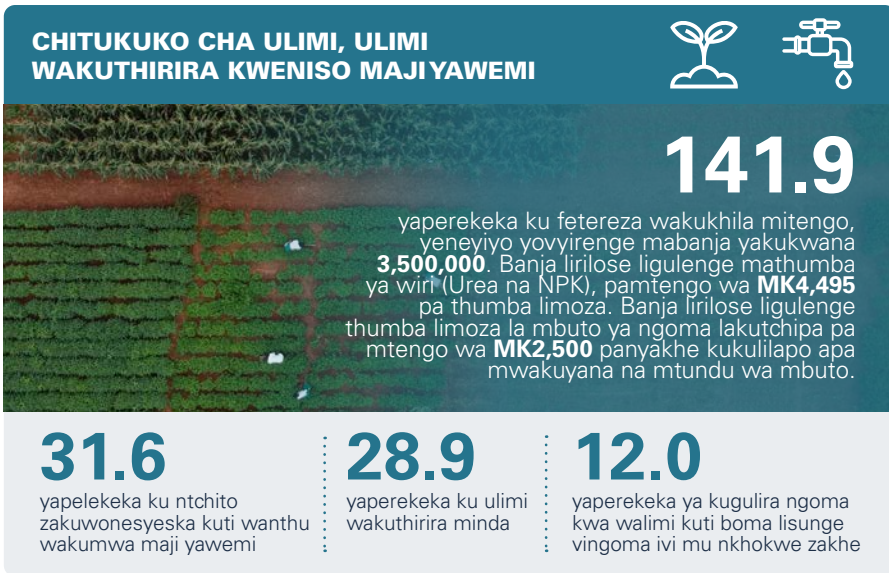
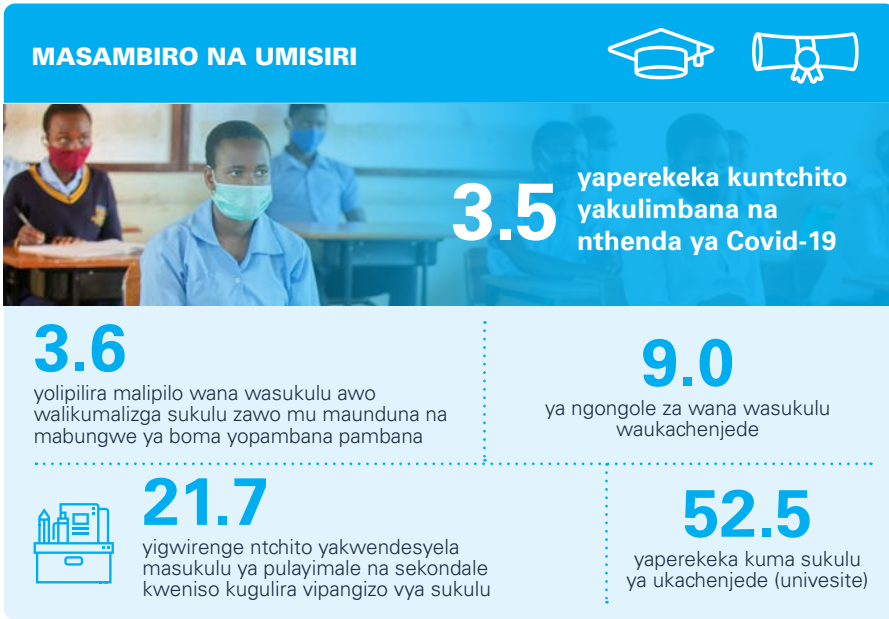
### 5. NDALAMA NAUMO ZAWIKIKIRA KUVIGAWO VYA BOMA

Naumo mwawonera pa chithuzi ichi, 27 peresenti yawikika ku ntchito zaulimi, maji na kusintha kwa nyengo, 31 peresenti yawikika ku ntchito za masambiro, 19 peresenti yawikika ku ntchito za kunyamula katundu na wanthu, 17 peresenti zawikika ku ntchito zaumoyo ndipo 6 peresenti zawikika ku ntchito za Nkhongono na Magesi.

#### CHITHUNZI 5



# VIGAWO VYAKUCHITIRA UWEMI BA MALAWI WOSE (MK, BILIYONI)



Wa Unduna wa Zachuma wazamumpokelerani pala mukukhumba kupulika vinandi ndipo mungalembe kalata kwa: Mulembi wa Ku Unduna wa za Chuma, PO Box 30049, Lilongwe. Panyakhe yimbani foni pa: +265 (0)1 789 355 Fax pa: +265 (0)1 789 173 E-mail pa: budget@finance.gov.mw

[www.finance.gov.mw](http://www.finance.gov.mw)



Government of Malawi

unicef  
for every child